



LGX Series Seals offer a highly capable means of sealing liquids, solids, gases and vapors for a variety of processes. Benefits of the LGX Series seals are, they're easy to install, do not require an air purge and can be designed to use Kalrez or Viton O-rings to permit their use in chemical applications.

Some of the main benefits of the LGX Series Seals are its ability to address significant axial shaft motion and maintain a vacuum. Thermal shaft expansion a problem for positive contact seals is just one of the many concerns addressed. Top-entry agitators known for their long shafts which produce high run out are particularly well suited for the LGX Series Seals along with processes that require a seal to maintain a vacuum with higher shaft speeds.

LGX seals are custom fabricated for job-specific applications.  
For more details please call 1.877.243.7325

### TECHNICAL SPECIFICATIONS:

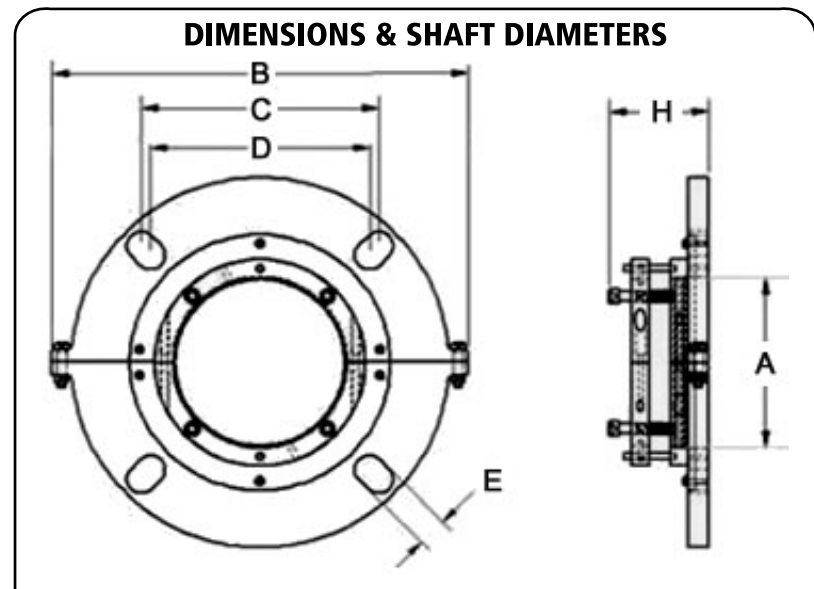
- Temperature Capability: **-60°F** to **+550°F** (HT Option)
- Pressure Holding: 60 psig
- Vacuum Holding: 30 hg.
- Typical Air loss: 0 SCFM
- Maximum Shaft Run Out: .250" TIR
- Stuffing Box Misalignment: .015 TIR per inch of shaft
- Shaft Growth: ± .750"
- Shaft Tolerance: ± .005"
- Mounting Deviation: 1°
- Standard Housing Thickness: 4.00"
- Shaft Speed: Variable by shaft diameter
- Torque setting for seal mounting: 50 Ft.lbs

### STANDARD CONFIGURATION:

- Compliant for Food, Dairy, Pharmaceutical & Non-Corrosive processing
- Effective for wet, dry, powder or slurry processing applications
- Process rated for **-60°F** to **350°F**
- Housing: T6-6061 Aluminium
- Faceplate: 304 Stainless Steel
- O-RING: Viton (FDA Compliant)
- Drive Collar: 304 Stainless Steel
- Wear Plates: PTFE-Teflon (FDA Compliant)
- Air Purged

### CONFIGURATION OPTIONS: (\*Non FDA Compliant Materials)

- Housing: 304 & 316 Stainless Steel, Hastelloy, Inconel, Carpenter 20
- Wear Plates: Teflon, \*Filled Teflon, Peek, Rulon, Vespel



A - SHAFT DIA.	B - HOUSING	C - BOLT SQ. MAX	D - BOLT SQ. MIN	E - SLOT WIDTH	F - ELASTOMER ADJ.	G - AIR LINE	H - THICKNESS
1.44 - 1.88"	7.00"	4.25"	4.00"	.66"	2.62"	1.875"	4.00"
2.00 - 2.38"	8.50"	5.13"	4.25"	.66"	3.20"	1.875"	4.00"
2.44 - 2.88"	10.50"	5.88"	5.38"	.68"	3.51"	1.875"	4.00"
3.00 - 3.38"	11.25"	6.13"	5.88"	.80"	4.10"	1.875"	4.00"
3.44 - 4.00"	12.50"	7.48"	6.17"	.94"	4.50"	1.875"	4.00"
4.18 - 4.88"	13.50"	8.16"	6.67"	.94"	4.75"	1.875"	4.00"

Dimensionally configured for CEMA Standard 300-013 U-Trough End Plates. LGX Series Seals are made to order. Production time may require up to 3 weeks. For additional information please visit [www.agdproducts.com](http://www.agdproducts.com) or call **Toll Free 1-877-243-7325**

