



NON SPLIT  
CONFIGURATION

An industry standard for over 20 years! The SD series unique design allows for simple installation and operation while providing effective sealing results. Widely used throughout the Dairy, Food, Pharmaceutical and Material processing industries as a dependable solution for sealing Bucket Elevators, Ribbon Blenders, Mixers, Screw Feeders, Crushers, Dryers and equipment under pressure or vacuum.

Durashield SD series seals address costly problems such as shaft leakage and material loss which lead to failed machinery and contaminated bearings. Our comprehensive seal rebuilt kits allow on-site maintenance. Please contact us for additional information

- Standard production shaft sizes from 0.625" to 4.50" (metric sizing available)
- Custom designs and additional shaft sizing available.
- Full, Semi & Non-split configurations.

### TECHNICAL SPECIFICATIONS:

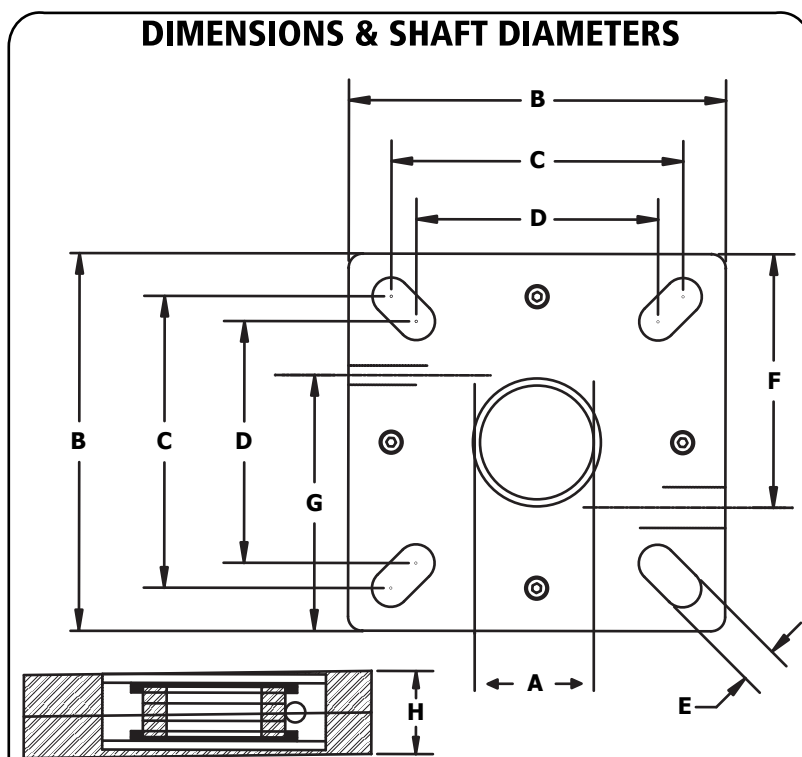
- Temperature Capability: -60°F to +300°F (HT Option)
- Pressure Holding: 20 psig
- Vacuum Holding: 10 hg
- Air Purge Connection Operating Pressure: 5-7 psig
- Typical Air loss: 1.5 - 2.0 SCFM
- Maximum Shaft Run Out: .250" TIR
- Stuffing Box Misalignment: .015 TIR per inch of shaft
- Shaft Growth: ± 0.062"
- Shaft Tolerance: ± 1/16"
- Mounting Deviation: 1°
- Standard Housing Thickness: 1.750"
- Minimum Housing Thickness: 1.250"
- Shaft Speed: Variable by shaft diameter
- Torque setting for seal mounting: 50 Ft.Lbs

### STANDARD CONFIGURATION:

- Compliant for Food, Dairy, Pharmaceutical & Non-Corrosive processing
- Effective for wet, dry, powder or slurry processing applications
- Process rated for -60°F to 300°F
- Housing: High-Density Polyethylene & Stainless Steel compression sleeves
- Faceplate: 304 Stainless Steel
- Elastomer Boot: EPDM-Silicone (FDA Compliant)
- Wear Plates: PTFE-Teflon (FDA Compliant)
- Purge: Air
- Easy onsite rebuilding & maintenance

### OPTIONS:

- Custom designs and mounting patterns
- Single and Dual shaft configurations



A - SHAFT DIA.	B - HOUSING	C - BOLT SQ. MAX	D - BOLT SQ. MIN	E - SLOT WIDTH	F - ELASTOMER ADJ.	G - AIR LINE	H - THICKNESS
.625 - 1.00"	4.25"	3.25"	2.75"	.47"	1.54"	2.87"	1.75"
1.19 - 1.25"	4.75"	3.63"	2.88"	.47"	1.86"	3.12"	1.75"
1.38 - 1.44"	5.25"	4.00"	3.50"	.66"	2.05"	3.50"	1.75"
1.5 - 1.69"	5.50"	4.25"	4.00"	.66"	2.03"	3.65"	1.75"
1.75 - 2.00"	6.50"	5.13"	4.25"	.66"	2.50"	4.25"	1.75"
2.19"	7.25"	5.63"	4.88"	.68"	2.92"	4.71"	1.75"
2.25 - 2.5"	7.50"	5.88"	5.38"	.68"	2.90"	4.92"	1.75"
2.69 - 3.00"	8.00"	6.13"	5.88"	.80"	3.07"	5.38"	1.75"
3.38 - 3.5"	9.25"	7.48"	6.17"	.80"	3.83"	5.95"	1.75"
3.94 - 4.00"	10.25"	8.16"	6.67"	.94"	4.24"	6.56"	1.75"
4.44 - 4.50"	10.88"	8.88"	7.75"	.94"	3.42"	7.26"	1.75"

DuraShield seals are dimensionally configured for type E & SCM medium duty 4-bolt flange bearings. Available for heavy duty RB end thrust bearings. For additional information please visit [www.durashieldseals.com](http://www.durashieldseals.com) or call 1-877-243-7325.

