

Externally Adjustable Pressure and Speed Performer-



"Take positive contact sealing technology to a whole new level of control. With maintenance free designs available the EA Series offers set and forget technology".

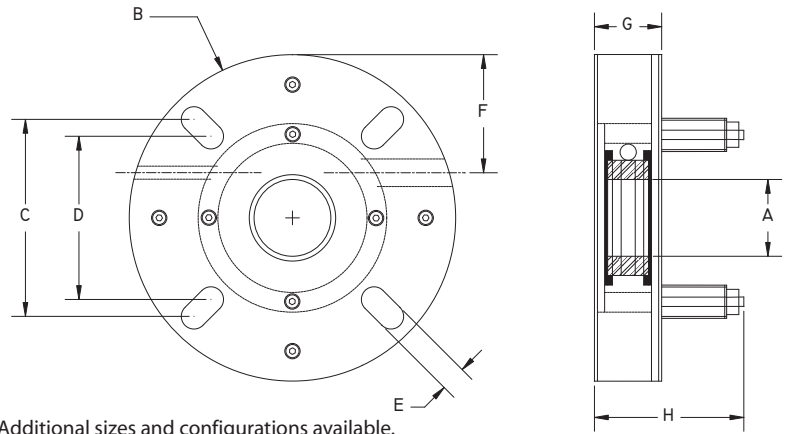
- ▶ Available in Non-Split, Semi-Split and Fully Split versions to fit C.E.M.A. screw conveyor and other bulk handling equipment.
- ▶ Unique design allows for zero maintenance with self adjusting option.
- ▶ Seal faces can be adjusted to run at maximum RPM or hold elevated pressures.
- ▶ Custom designs available to perfectly suit your sealing requirements.
- ▶ Wear surfaces of seal are replaceable with low cost rebuild kit.
- ▶ Will address moderate linear shaft growth and axial run out.

EA Series / DURA-SHIELD Engineered Seals effectively address the most problematic applications. High pressures, excessive shaft speed and difficulty to adjust are the most common reasons for pre-mature seal failure. EA Series seals address these problems while providing for the requirement of a positive pressure seal with highly abrasive wet and dry product.

Although EA Series seals are designed to fit C.E.M.A. standards for 4-bolt flange bearings they are not capable of being mounted between bearing and end plate of equipment. Please allow for proper clearance between back plate of seal and bearing.

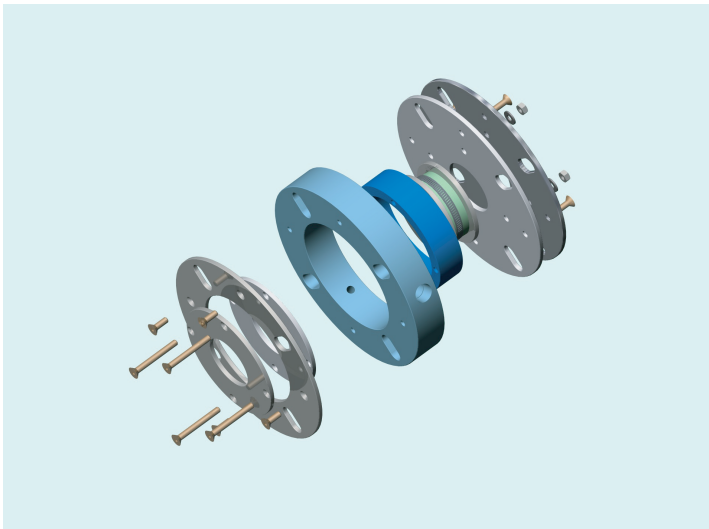
EA Series Technical Data-

- Min. & Max. Operating Temp. / **-60°F to +550°F - HT Option**
- Pressure Holding / **60 psig. Max**
- Vacuum Holding / **30 hg. Max**
- Air Purge Connection Start Pressure / **15 - 20 psig.**
- Typical Air loss / **1.5 - 2.0 SCFM**
- Torque setting for seal mounting / **50 pounds**
- Maximum Shaft Run Out / **1/4" TIR.**
- Stuffing Box Misalignment / **.015 TIR per inch of shaft**
- Shaft Growth / **+/- 1/16"**
- Shaft Tolerance / **+/- 1/16"**
- Max. Out of Square Mounting Deviation / **1°**
- Field Repairable / **YES**
- Food Service / **YES**
- Chemical Resistant Materials Available / **YES**
- High Temperature Versions Available / **YES**
- Custom Designs Available / **YES**
- Standard Housing Material / **HDPE**
- Standard Stainless Steel Type / **304SS**
- Standard Elastomer Type / **EPDM**
- Standard Seal Thickness / **1-7/8" - 4.00" with self Adj.**
- Minimum Available Seal Thickness / **1-1/2"**
- Maximum Shaft Speed / **Do Not Exceed 600 FPM**



Shaft Diameter -A-	Housing -B-	Bolt Sq. Max. -C-	Bolt Sq. Min. -D-	Slot Width -E-	Elastomer Adjust. -F-	Min. Width -G-	Max. Width -H-
1.44"-1.88"	7.00" Dia.	4.25"	4.00"	.66"	2.62"	1-7/8"	4.00"
2.00"-2.38"	8.50" Dia.	5.13"	4.25"	.66"	3.20"	1-7/8"	4.00"
2.44"-2.88"	10.50" Dia.	5.88"	5.38"	.68"	3.51"	1-7/8"	4.00"
3.00"-3.38"	11.25" Dia.	6.13"	5.88"	.80"	4.10"	1-7/8"	4.00"
3.44"-4.00"	12.50" Dia.	7.48"	6.17"	.94"	4.50"	1-7/8"	4.00"
4.18"-4.88"	13.50" Dia.	8.16"	6.67"	.94"	4.75"	1-7/8"	4.00"

Dimensionally configured for CEMA Standard 300-013 U-Trough End Plates. EA Series Seals are made to order. Please allow 2 weeks for delivery.



952 Thomas Drive
 Warminster, PA 18974-3867 USA
 Telephone: (215)-682-9643 Fax: (215)-682-9644
 www.AGDPRODUCTS.com