

*Ability to be custom configured for optimum performance-*



*"Designed to cost effectively utilize engineered plastics." HD Series address the most abrasive and temperature sensitive environments. The aluminum or stainless steel housings will support full weight of screw conveyor drives*

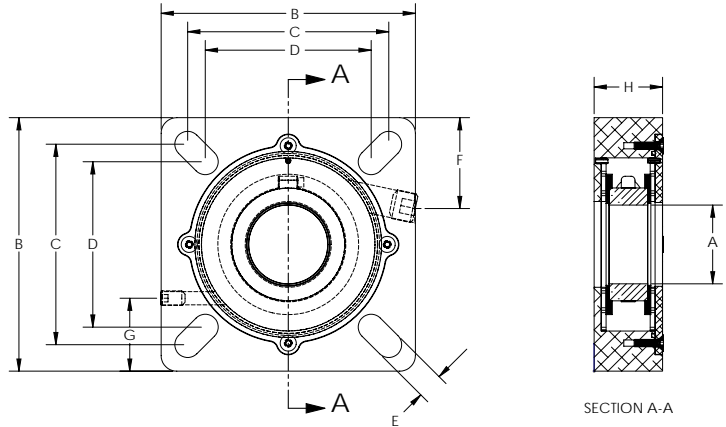
- ▶ Available in Non-Split and Fully Split versions for CEMA standard Dodge E and SCM Type flange bearings.
- ▶ Standard materials of construction only allow for seals to be installed in temps of -60°F to +450°F. Can be config. to 600°F
- ▶ Will address moderate linear shaft growth and axial run out.
- ▶ For your convenience full seals and rebuild kits are available from inventory in shaft sizes 1.00" thru 4.50" size shafts.
- ▶ Can be purchased in either Anodized Aluminum or Stainless Steel Housings. Rulon J, PEEK or Mineral filled teflon stators.
- ▶ Air purge 4-6 psig over product or internal pressure of system.

HD Series / DURA-SHIELD Engineered Seals eliminate the costly problems associated with shaft leakage. Contaminated bearings wear quickly and create an unsafe work place environment. HD Series seals drastically reduce on-going maintenance costs associated with sealing abrasive wet and dry product.

Developed to address the need for a standard heavy duty seal that can be easily custom configured to address the most difficult applications like High Temperature, Fast shaft speed, Excessive face pressure or Screw conveyor drive mounting. The HD Series Seals function and install just like our SD Series with the added benefit of strength and longer seal life.

### HD Series Technical Data-

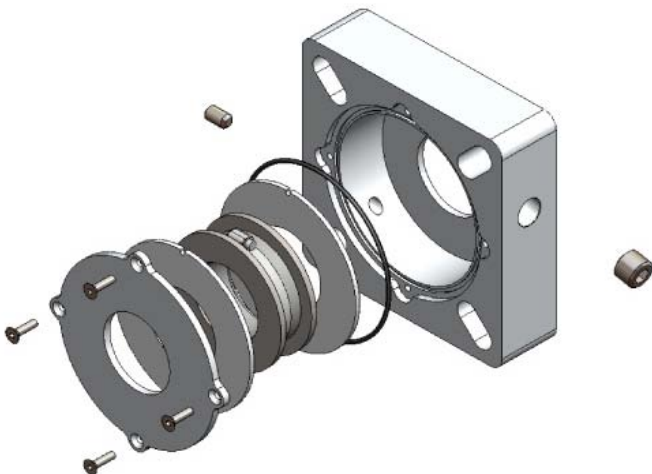
- Min. & Max. Operating Temp. / **-60°F to +600°F**
- Pressure Holding / **20 psig.**
- Vacuum Holding / **10 hg.**
- Air Purge Connection Start Pressure / **15 - 20 psig.**
- Typical Air loss / **1.5 - 2.0 SCFM**
- Torque setting for seal mounting / **50 pounds**
- Maximum Shaft Run Out / **1/4" TIR.**
- Stuffing Box Misalignment / **.015 TIR per inch of shaft**
- Shaft Growth / **+/- 1/16"**
- Shaft Tolerance / **+/- 1/16"**
- Max. Out of Square Mounting Deviation / **1°**
- Field Repairable / **YES**
- Food Service / **Can Have Materials Up-Graded**
- Chemical Resistant Materials Available / **YES**
- High Temperature Versions Available / **YES**
- Custom Designs Available / **NO**
- Standard Housing Material / **Aluminum and Stainless**
- Standard Stainless Steel Type / **304SS**
- Standard Elastomer Type / **Silicone**
- Standard Seal Thickness / **1-7/8"**
- Minimum Available Seal Thickness / **1-7/8"**
- Maximum Shaft Speed / **Do Not Exceed 800 FPM**



No other additional configurations available.

Shaft Diameter -A-	Housing -B-	Bolt Sq. Max. -C-	Bolt Sq. Min. -D-	Slot Width -E-	Elastomer Adjust. -F-	Air Connect -G-	Seal Width -H-
5/8"-1.00"	4.25	3.25	2.25	.48	1.51	1.38	1-7/8"
1.25"	4.75"	3.63"	2.88"	.48"	1.62"	1.63"	1-7/8"
1.50"	5.50"	4.25"	3.87"	.66"	1.78"	1.74"	1-7/8"
2.00"	6.50"	5.14"	4.24"	.66"	2.33"	1.87"	1-7/8"
2.19"	7.25"	5.63"	4.88"	.68"	2.60"	2.54"	1-7/8"
2.43"	7.50"	6.00"	5.25"	.68"	2.55"	2.58"	1-7/8"
3.00"	8.00"	6.13"	5.88"	.80"	2.55"	2.62"	1-7/8"
3.43"	9.25"	7.48"	6.17"	.80"	3.09"	3.30"	1-7/8"
3.94"-4.00"	10.25"	8.16"	6.67"	.94"	3.48"	3.69"	1-7/8"
4.43"-4.50"	10.88"	8.88"	7.75"	.94"	3.46"	3.62"	1-7/8"

Dimensionally configured for CEMA compliant and Dodge E and SCM type bearings.



Warminster, PA 18974-3867 USA  
 Telephone: (215)-682-9643 Fax: (215)-682-9644  
 www.AGDPRODUCTS.com