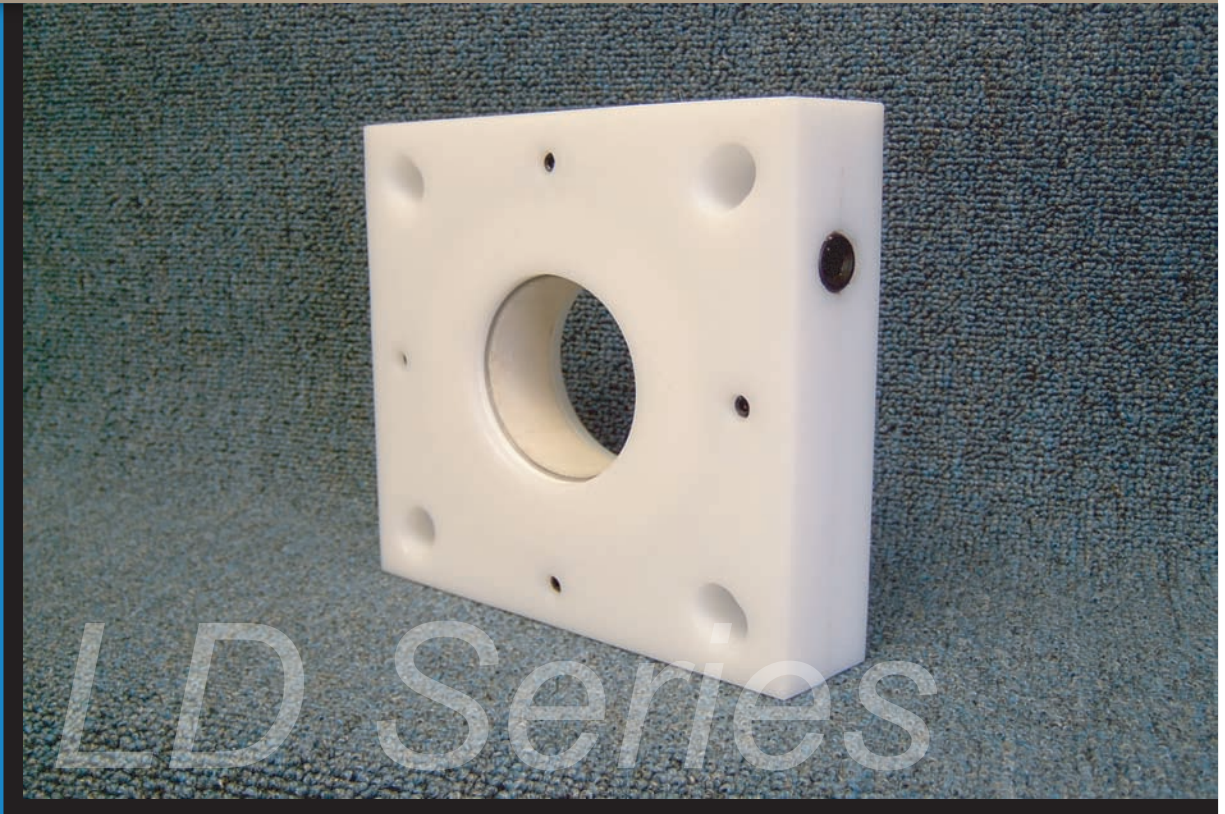


Most Economical Solution For Wet and Dry Powders-



"A lighter duty version of the highly successful SD Series, the recently redesigned LD Series is the perfect solution for applications that do not require the need for severe duty sealing".

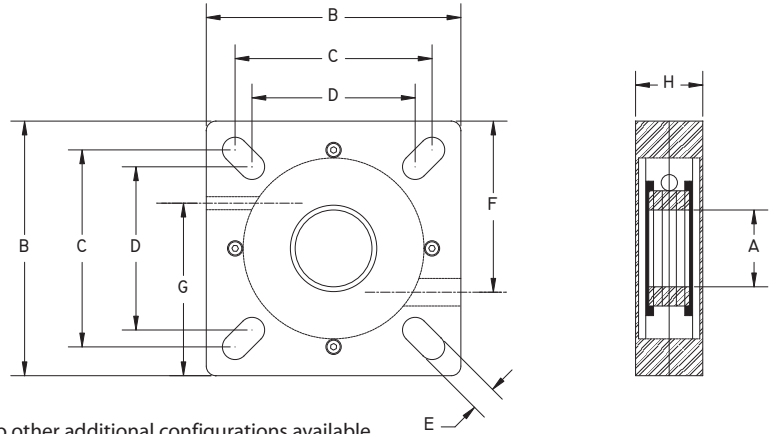
- ▶ *Non-Split only versions available to fit C.E.M.A. screw conveyor and other bulk handling equipment.*
- ▶ *Standard materials of construction only allow for seals to be installed in temps of -60°F to +250°F.*
- ▶ *Will address moderate linear shaft growth and axial run out.*
- ▶ *For your convenience full seals and rebuild kits are available from inventory in shaft sizes 1.00", 1.50", 2.00", 2.44", 3.00" and 3.44"*
- ▶ *Can be customized for use with chemicals that are corrosive to many types of stainless steels.*
- ▶ *Air purge 4-6 psig over product or internal pressure of system.*

LD Series / DURA-SHIELD Engineered Seals eliminate the costly problems associated with shaft leakage. Contaminated bearings wear quickly and create an unsafe work place environment. LD Series seals drastically reduce on-going maintenance costs associated with sealing mildly abrasive wet and dry product that processes at lower temperatures.

Developed as a lower cost light duty option to the SD Series, this design can be applied to many similar types of applications with equal success. Typical applications include: Screw Conveyors, Bucket Elevators, Mixers, Screw Feeders and Crushers. LD Series Seals are best utilized in non-weight bearing applications.

LD Series Technical Data-

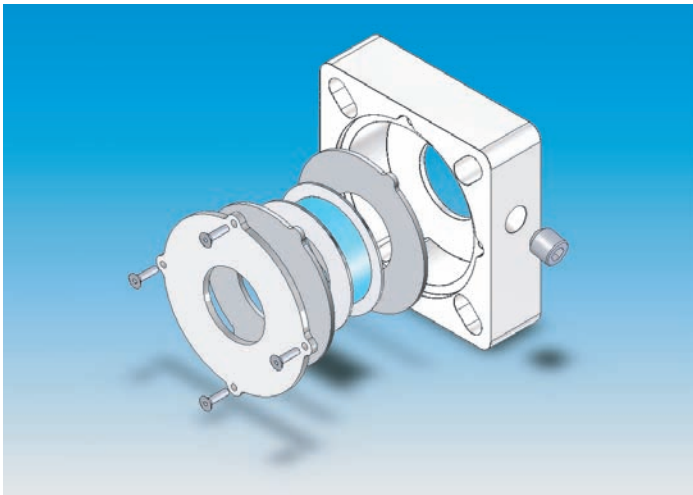
- Min. & Max. Operating Temp. / **-60°F to +250°F**
- Pressure Holding / **20 psig.**
- Vacuum Holding / **10 hg.**
- Air Purge Connection Start Pressure / **15 - 20 psig.**
- Typical Air loss / **1.5 - 2.0 SCFM**
- Torque setting for seal mounting / **30 pounds**
- Maximum Shaft Run Out / **1/4" TIR.**
- Stuffing Box Misalignment / **.015 TIR per inch of shaft**
- Shaft Growth / **+/- 1/16"**
- Shaft Tolerance / **+/- 1/16"**
- Max. Out of Square Mounting Deviation / **1°**
- Field Repairable / **YES**
- Food Service / **YES**
- Chemical Resistant Materials Available / **YES**
- High Temperature Versions Available / **NO**
- Custom Designs Available / **NO**
- Standard Housing Material / **HDPE**
- Standard Stainless Steel Type / **304SS**
- Standard Elastomer Type / **EPDM**
- Standard Seal Thickness / **1-3/4"**
- Minimum Available Seal Thickness / **1-3/4"**
- Maximum Shaft Speed / **Do Not Exceed 400 FPM**



No other additional configurations available.

Shaft Diameter -A-	Housing -B-	Bolt Sq. Max. -C-	Bolt Sq. Min. -D-	Slot Width -E-	Elastomer Adjust. -F-	Air Connect -G-	Seal Width -H-
5/8"-1.00"	N/A	N/A	N/A	N/A	N/A	N/A	N/A
1.50"	5.50"	4.25"	4.00"	.66"	3.82"	3.82"	1-3/4"
2.00"	6.50"	5.13"	4.25"	.66"	4.00"	4.41"	1-3/4"
2.44"	7.50"	5.88"	5.38"	.68"	5.56"	4.94"	1-3/4"
3.00"	8.00"	6.13"	5.88"	.80"	5.72"	5.19"	1-3/4"
3.44"	9.25"	7.48"	6.17"	.80"	6.75"	5.85"	1-3/4"

Dimensionally configured for Type E and SCM Medium Duty 4-Bolt Flange Bearings. LD Series seals are available in standard shaft sizes from 1-1/2" to 3-7/16" only. All LD Series are stock items. DURA-SHIELD Seals are also available for Heavy Duty RB End Thrust Bearings. Please ask for info. regarding our new HD Series Seals.



952 Thomas Drive
Warminster, PA 18974-3867 USA
Telephone: (215)-682-9643 Fax: (215)-682-9644
www.AGDPRODUCTS.com