

Best Solution for longitudinal shaft growth with no air purge necessary.



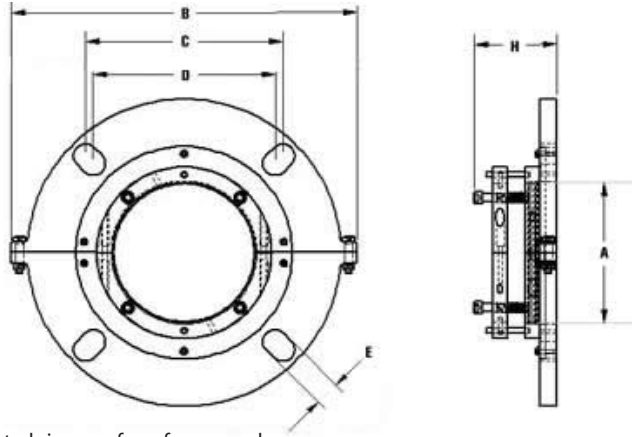
LGX Series

Developed for applications that require containment of vapors & gases under vacuum.

The LGX Series Seals do not require an air purge and can be configured to address a wide variety of chemical and shaft movement

- ▶ Available in Non-Split and Fully Split Versions to fit most bulk handling equipment.
- ▶ A wide variety of material selections are available to perfectly suit your high temp, high speed or chemically destructive applications.
- ▶ LGX Series will allow for significant axial shaft motion. Recommended for applications with shaft float & thermal expansion problems.
- ▶ LGX Series Seals are not available from stock & produced on a custom basis to perfectly suit your application.
- ▶ Wear surfaces of the seal are replaceable with rebuild kits to aid in cost savings and continued service.
- ▶ Unlike other DURA-SHIELD Seals an air purge or flush is not required & can be designed to eliminate any elastomers.

An advancement in the DURA-SHIELD line of seals. The LGX Series Seals offer a highly capable means of sealing liquids, solids, gasses and vapors for a variety of processes. Benefits of the LGX Series seals are, they're easy to install, do not require an air purge and can be designed to use Kalrez O-rings or no elastomers at all to permit their use in many highly aggressive chemical applications. Some of the main benefits of the LGX Series Seals are its ability to address significant axial shaft motion and maintain a vacuum. Thermal shaft expansion a problem for positive contact seals is just one of the many concerns addressed. Top-entry agitators known for their long shafts which produce high run out are particularly well suited for the LGX Series Seals along with processes that require a seal to maintain a vacuum with higher shaft speeds.



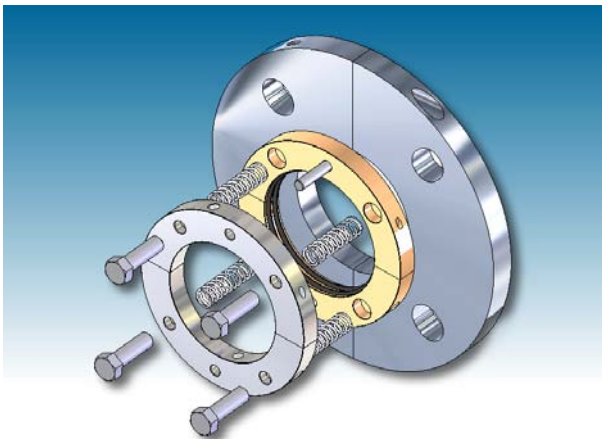
Posted sizes are for reference only. Please contact an AGD Products sales representative to inquire about custom sizing.

LGX Series Technical Data-

- Min. & Max. Operating Temp. / **-60°F to +550°F - HT Option**
- Pressure Holding / **60 psig. Max**
- Vacuum Holding / **30 hg. Max**
- No air purge required
- Typical Air loss / **0 SCFM**
- Torque setting for seal mounting / **50 pounds**
- Maximum Shaft Run Out / **1/4" TIR.**
- Stuffing Box Misalignment / **.015 TIR per inch of shaft**
- Shaft Growth / **+/- 3/4"**
- Shaft Tolerance / **+/- .005"**
- Max. Out of Square Mounting Deviation / **1°**
- Field Repairable / **YES**
- Food Service / **YES**
- Chemical Resistant Materials Available / **YES**
- High Temperature Versions Available / **YES**
- Custom Designs Available / **YES**
- Standard Housing Material / **6061 Anodized Aluminum**
- Standard Stainless Steel Type / **304SS**
- Standard Elastomer Type / **Silicone**
- Standard Seal Thickness / **4.00"**
- Minimum Available Seal Thickness / **4.00"**
- Maximum Shaft Speed / **Do Not Exceed 800 FPM**

Shaft Diameter -A-	Housing -B-	Bolt Sq. Max. -C-	Bolt Sq. Min. -D-	Slot Width -E-	Elastomer Adjust. -F-	Min. Width -G-	Max. Width -H-
1.44"-1.88"	7.00" Dia.	4.25"	4.00"	.66"	2.62"	1-7/8"	4.00"
2.00"-2.38"	8.50" Dia.	5.13"	4.25"	.66"	3.20"	1-7/8"	4.00"
2.44"-2.88"	10.50" Dia.	5.88"	5.38"	.68"	3.51"	1-7/8"	4.00"
3.00"-3.38"	11.25" Dia.	6.13"	5.88"	.80"	4.10"	1-7/8"	4.00"
3.44"-4.00"	12.50" Dia.	7.48"	6.17"	.94"	4.50"	1-7/8"	4.00"
4.18"-4.88"	13.50" Dia.	8.16"	6.67"	.94"	4.75"	1-7/8"	4.00"

Dimensionally configured for CEMA Standard 300-013 U-Trough End Plates. LGX Series Seals are made to order. Please allow upto 3 weeks for delivery.



952 Thomas Drive
 Warminster, PA 18974-3867 USA
 Telephone: (215)-682-9643 Fax: (215)-682-9644
 www.AGDPRODUCTS.com