

*Seals Highly Abrasive Wet and Dry Powders-*



*"The most versatile seal available on the market today, You can count on an SD Series to perform beyond your expectations for ease of installation and reliability".*

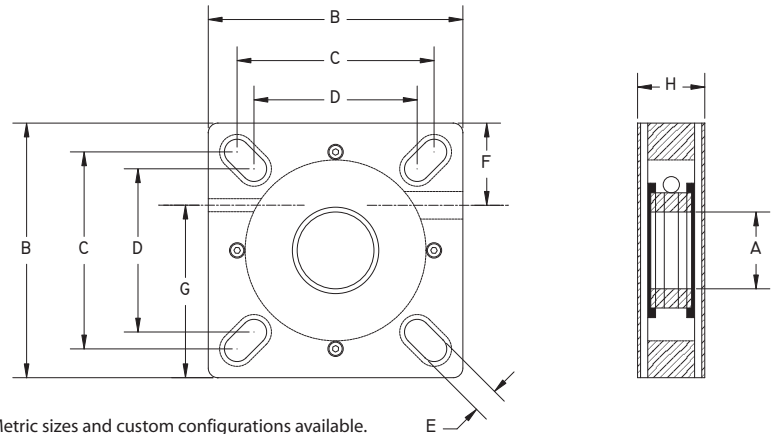
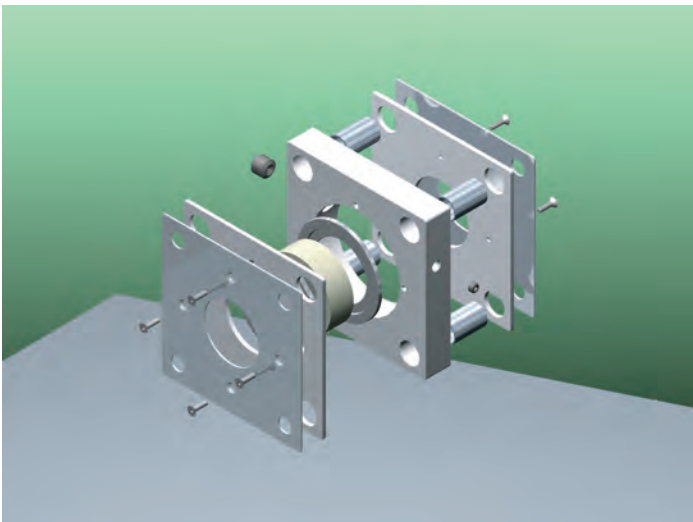
- ▶ Available in Non-Split, Semi-Split and Fully Split versions to fit C.E.M.A. screw conveyor and other bulk handling equipment.
- ▶ Depending on materials selected for construction, can be installed in temps of -60°F to +550°F.
- ▶ Will address moderate linear shaft growth and axial run out.
- ▶ Custom designs available to perfectly suit your sealing requirements.
- ▶ Wear surfaces of seal are replaceable with low cost rebuild kit.
- ▶ Air purge 4-6 psig over product or internal pressure of system.

SD Series / DURA-SHIELD Engineered Seals eliminate the costly problems associated with shaft leakage. Contaminated bearings, gearboxes and drive assemblies wear quickly and create an unsafe work place environment. SD-Series seals drastically reduce on-going maintenance costs associated with sealing abrasive wet and dry product.

Developed initially for Screw Conveyors, this self contained cartridge design can be mounted to many other types of equipment with equal success. Typical applications include: Bucket Elevators, Ribbon Blenders, Mixers, Screw Feeders, Crushers, Dryers and various equipment under pressure or vacuum.

### SD Series Technical Data-

- Min. & Max. Operating Temp. / **-60°F to +550°F - HT Option**
- Pressure Holding / **20 psig.**
- Vacuum Holding / **10 hg.**
- Air Purge Connection Start Pressure / **15 - 20 psig.**
- Typical Air loss / **1.5 - 2.0 SCFM**
- Torque setting for seal mounting / **50 pounds**
- Maximum Shaft Run Out / **1/4" TIR.**
- Stuffing Box Misalignment / **.015 TIR per inch of shaft**
- Shaft Growth / **+/- 1/16"**
- Shaft Tolerance / **+/- 1/16"**
- Max. Out of Square Mounting Deviation / **1°**
- Field Repairable / **YES**
- Food Service / **YES**
- Chemical Resistant Materials Available / **YES**
- High Temperature Versions Available / **YES**
- Custom Designs Available / **YES**
- Standard Housing Material / **HDPE**
- Standard Stainless Steel Type / **304SS**
- Standard Elastomer Type / **SILICONE / EPDM**
- Standard Seal Thickness / **1-3/4"**
- Minimum Available Seal Thickness / **1-1/16"**
- Maximum Shaft Speed / **Do Not Exceed 400 FPM**



Metric sizes and custom configurations available.

Shaft Diameter -A-	Housing -B-	Bolt Sq. Max. -C-	Bolt Sq. Min. -D-	Slot Width -E-	Elastomer Adjust. -F-	Air Connect -G-	Seal Width -H-
★ 5/8" 1.00"	4.25"	3.25"	2.75"	.47"	1.54"	2.87"	1-3/4"
1.19"- 1.25"	4.75"	3.63"	2.88"	.47"	1.86"	3.12"	1-3/4"
1.38"- 1.44"	5.25"	4.00"	3.50"	.66"	2.05"	3.50"	1-3/4"
★ 1.50" 1.69"	5.50"	4.25"	4.00"	.66"	2.03"	3.65"	1-3/4"
★ 1.75" 2.00"	6.50"	5.13"	4.25"	.66"	2.50"	4.25"	1-3/4"
2.19"	7.25"	5.63"	4.88"	.68"	2.92"	4.71"	1-3/4"
★ 2.25" 2.50"	7.50"	5.88"	5.38"	.68"	2.90"	4.92"	1-3/4"
★ 2.69" 3.00"	8.00"	6.13"	5.88"	.80"	3.07"	5.38"	1-3/4"
★ 3.38" 3.50"	9.25"	7.48"	6.17"	.80"	3.83"	5.95"	1-3/4"
3.94"- 4.00"	10.25"	8.16"	6.67"	.94"	4.24"	6.56"	1-3/4"
4.44"- 4.50"	10.88"	8.88"	7.75"	.94"	3.42"	7.26"	1-3/4"

Dimensionally configured for Type E and SCM Medium Duty 4-Bolt Flange Bearings. DURA-SHIELD Seals are also available for Heavy Duty RB End Thrust Bearings. Please ask for info. regarding our New HD Series seals. ★ Indicates Stock Item.



952 Thomas Drive  
Warminster, PA 18974-3867 USA  
Telephone: (215)-682-9643 Fax: (215)-682-9644  
www.AGDPRODUCTS.com

LIT# SD2006-DURA